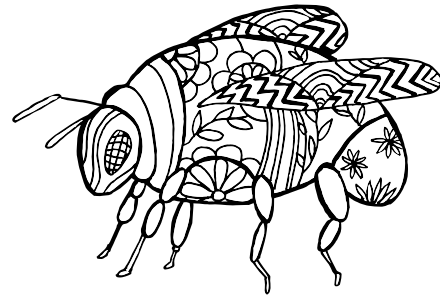


SUDOKU 9x9

schwer



	7		6					9
5	2				7			
			1	4				
6		8				3		7
			8					
		1		5				6
		5		1			2	
4		9	5				1	
					4			

Sudoku-Vorlage Nr. 0207

Lösung

1	7	4	6	2	8	5	3	9
5	2	6	9	3	7	8	4	1
9	8	3	1	4	5	6	7	2
6	4	8	2	9	1	3	5	7
3	5	2	8	7	6	1	9	4
7	9	1	4	5	3	2	8	6
8	6	5	7	1	9	4	2	3
4	3	9	5	6	2	7	1	8
2	1	7	3	8	4	9	6	5