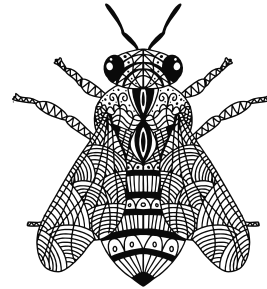
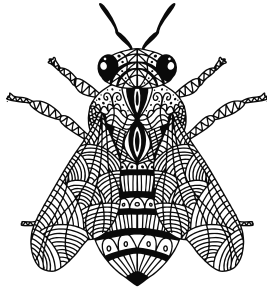


SUDOKU 9x9

sehr schwer



5								
2		9		6		5	1	
		6		8				
	3			4				8
								2
9			3					
1		8			6			
3			2		9	7		4
				5			6	

Sudoku-Vorlage Nr. 0312

Lösung

5	1	3	9	2	7	8	4	6
2	8	9	4	6	3	5	1	7
4	7	6	1	8	5	3	2	9
6	3	1	5	4	2	9	7	8
8	5	7	6	9	1	4	3	2
9	2	4	3	7	8	6	5	1
1	4	8	7	3	6	2	9	5
3	6	5	2	1	9	7	8	4
7	9	2	8	5	4	1	6	3