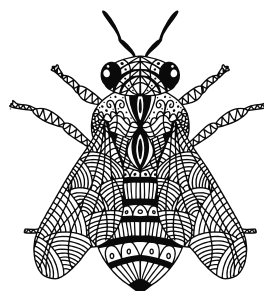
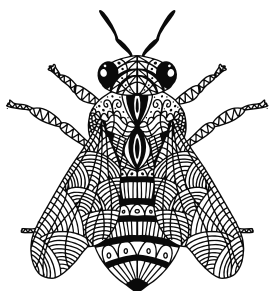


SUDOKU 9x9

sehr schwer



				5	1	9		
6				8				
		7						
					5	4		
	5	4		6	9		8	
1					2			6
2			1				3	
					4			8
9		6		7				

Sudoku-Vorlage Nr. 0311

Lösung

4	8	3	6	5	1	9	2	7
6	2	1	9	8	7	5	4	3
5	9	7	4	2	3	8	6	1
8	6	2	3	1	5	4	7	9
3	5	4	7	6	9	1	8	2
1	7	9	8	4	2	3	5	6
2	4	8	1	9	6	7	3	5
7	1	5	2	3	4	6	9	8
9	3	6	5	7	8	2	1	4